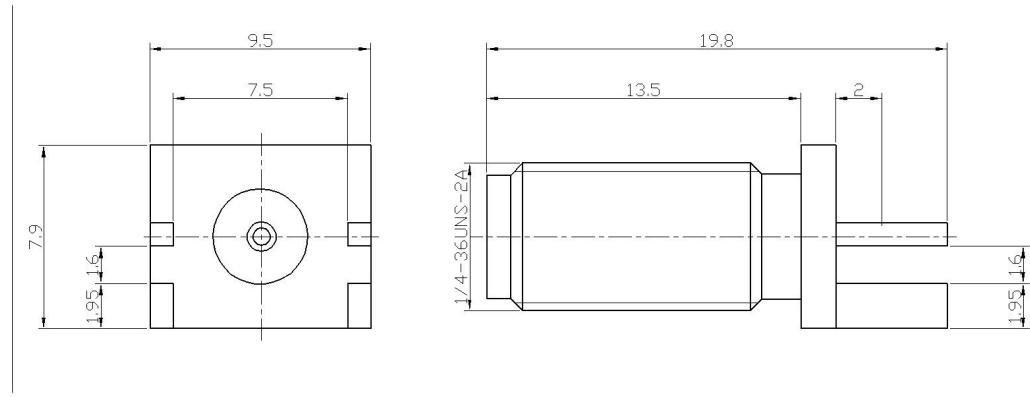


| | | | | |
|-------|---------------|------|-----------|---------|
| RevNo | Revision note | Date | Signature | Checked |
| V1.0 | Sketch only | | | |





材料与电镀
Materials&Electroplating

| | |
|---------------------|-----------------------------|
| 内导体 Conduct | 黄铜/镀金 Brass/Gold Plating |
| 介质 Insulator | 聚四氟乙烯 PTFE |
| 外壳 Body | 黄铜/镀金 Brass/Gold Plating |
| 其他零件 Other Parts | |

电气性能
Electric Performance

| | |
|-------------------------|------------------|
| 阻抗 Impedance | 50 欧姆 50 OHMS |
| 频率范围 Frequency Range | 0-3GHz |
| 驻波比 VSWR | 1.2 |
| 额定电压 Rating Voltage | 350VAC |

Unless otherwise specified, tolerances as below:
.x ±0.15
.xx ±0.1
.xxx ±0.05
Angle: ±2°

| | | | | | |
|--------------------------------------|-----------|------------|---|--|----------------|
| Material: Finish: Unit REV. | See Notes | Weight | - |  Lenor 乐福士 | |
| | See Notes | Scale | - | | |
| | mm | Page | 01 | | |
| | V1.0 | DWG No | - | | |
| Drawn | Date: | Projection |  | P/N 料号 | 89-5091-011-01 |
| Checked | Date: | Title: | | | |
| Approved | Date: | 品名 | | | |
| RPSMA PLUG PCB MOUNT | | | | | |