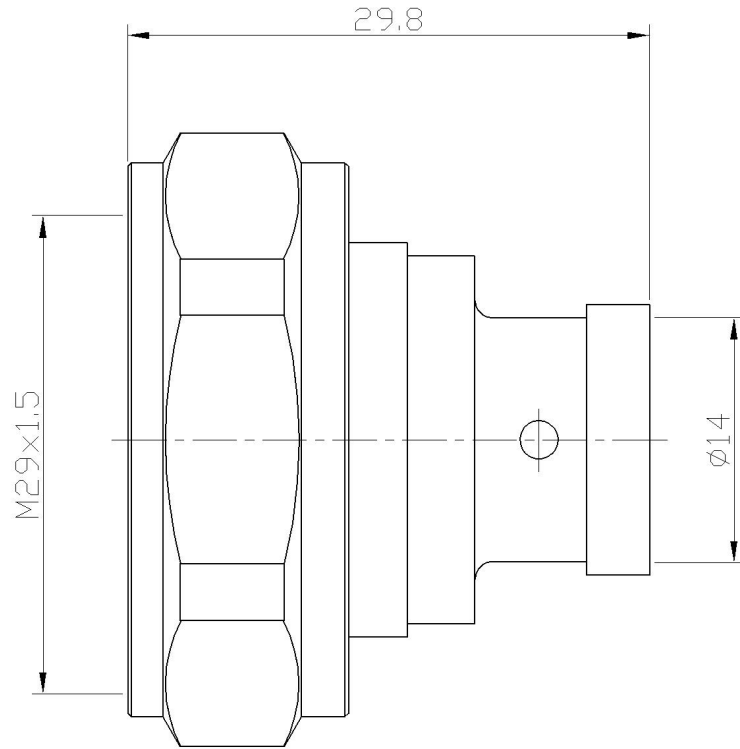


RevNo	Revision note	Date	Signature	Checked
V1.0	Sketch only			



材料与电镀
Materials&Electroplating

内导体 Conduct	黄铜/镀银 Brass/Silver Plating
介质 Insulator	聚四氟乙烯 PTFE
外壳 Body	黄铜镀/三元合金 Brass/Ternary Alloy Pating
其他零件 Other Parts	黄铜/镀镍 Brass/Nickel Plating

电气性能
Electric Performance

阻抗 Impedance	50 欧姆 50 Ohms
频率范围 Frequency Range	0-3GHz
驻波比 VSWR	1.2
额定电压 Rating Voltage	500VAC

Unless otherwise specified,
tolerances as below:
.x ±0.15
.xx ±0.1
.xxx ±0.05
Angle: ±2°

Material:	See Notes	Weight	-
Finish:	See Notes	Scale	-
Unit	mm	Page	01
REV.	V1.0	DWG No	-
Drawn	Date:	Projection	
Checked	Date:	Title:	7/16 PLUG SOLDER FOR 1/2S CABLE
Approved	Date:	品名	



P/N 料号 90-5161-345-01

Cust P/N.